

Cruiser Consoles

2535 Toowoomba – Cecil Plains Road
Biddeston QLD 4401
Phone: 0419 784 590
Email: sales@cruiserconsoles.net
<http://www.cruiserconsole.com.au>

70 Series Landcruiser Console Specialists

Full Length Centre Floor Console - Install Instructions

Centre console fitting instructions for New Dash 76 Wagon, 79 Dual Cab and Late model 79 Single cabs

1. REMOVING FACTORY CONSOLE

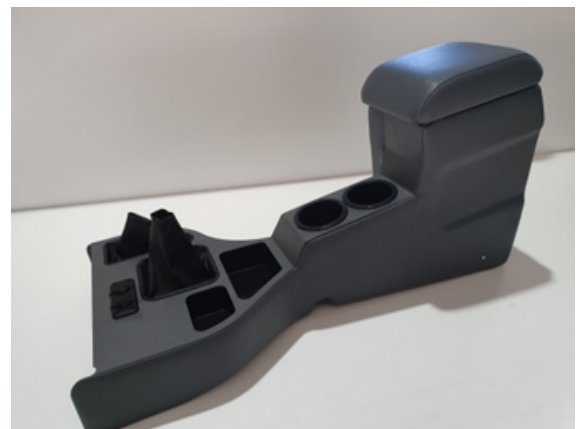
Remove the 5 screws from the base of the factory console (2 on each side & 1 at the front). These screws are not reused on the new console.

- TIP 79 Series PRE DPF – Single Cab (not pictured): This simply has 4 screws in the base of the old console for removal. In the new console to secure it, there are 2 screws under the lid and 2 under the front cup holder, the rest of the install procedure is similar for all vehicles.



2. PREPARING NEW CONSOLE FOR INSTALL

- Remove the 2 screws from the rear of the console and 1 bolt from under the rear cup holder in preparation for the installation.
- Take note of the hole in the console under the vinyl in this location (refer to picture) prior to installing. (plastic new dash only).



3. FACTORY THREADS

Take note of the factory threads that the console will be secured by. (No drilling into the cab)



Cruiser Consoles

70 Series Landcruiser Console Specialists

4. OEM CUPHOLDER REMOVAL

Remove the 3 bolts and the plastic trim clip from the factory cup holder base.

Remove the 3 bolts from the SRS airbag module cover. (Do not remove the module) and the 3 screws from the cup holder. Unplug the harness from the factory Cigarette socket.



5. FRONT SOCKET POWER

Make sure the ignition is off. Then cut the plug from the harness and crimp on the female terminal to the red wire and the male terminal to the white wire.

NOTE – the black metal cover is to be removed as the new console will not fit if it is still in place.



6. REAR SOCKETS

We have deliberately made the harness for the rear sockets too short to reach the front harness. This is to prevent overloading of the circuit, an auxiliary (AUX) power box can be found under the bonnet in front of the brake booster. We suggest using this power source as it is the best and easiest to be wired too.



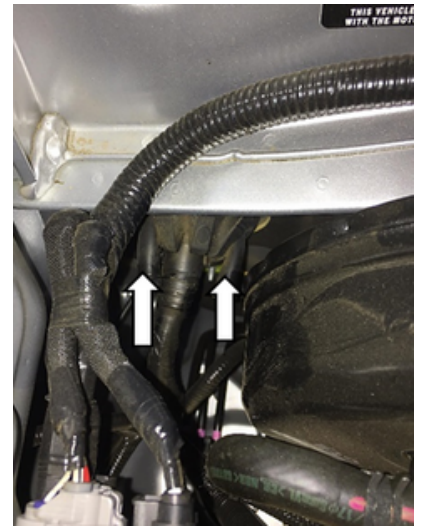
Cruiser Consoles

70 Series Landcruiser Console Specialists

7. REAR SOCKETS POWER – FIRE WALL

Pictured, are the 2 grommets beside the brake booster that can be used to run the power through the fire wall for the console.

The wires can then be run down the kick panel and under the carpet to the handbrake where they can be connected to the console harness



8. POWER & EARTH SELECTION

Pictured are the fused terminals that provide the easiest power supply for the console. The wires can be brought up through the bottom of the bower box and be connected to the (-neg) Earth terminal. You can choose to connect to constant power – 12V battery (BATT) or accessory power – 12V accessory (ACC). i.e. on with the key.



9. CONSOLE FITTMENT

Put the transfer stick in neutral and remove the gear stick knobs. You may want to tape the dash to prevent accidental damage to the plastic. Plug in the new USB and cigarette harness and slide the new console over the gear sticks and under the dash. You might have to wriggle it slightly to get it over the factory rubber boots.

- TIP – This is easier with 2 people however, if installing by yourself the driver's seat can be tipped back. While the console is resting on the edge of the seat the front socket harness can be connected.



Cruiser Consoles

70 Series Landcruiser Console Specialists

10. SECURING THE CONSOLE

Remove the rear cup holder from the console; this is just pressed into the top trim. Remove the 6mm bolt and loosen the 2 rear screws so they do not protrude on the inside of the console.

Put the console in place and make sure the seat belt stalks are folded forward. The silver brackets under the rear of the console must slide up inside the bottom of the console. Use a torch to shine down through the rear cup cavity to find the hole before dropping the screw into place to start the thread.

- Tip: at this stage do not tighten the cup holder screw.



11. TIGHTENING OF SCREWS

Place one hand on the lid of the console to gently hold it down and make sure the floor mat is clear from under the console. Start and fully tighten each of the side screws, once this is finished you may now tighten the 6mm bolt inside the rear cup cavity. After all screws are tightened and secure place the rear cup holder back into the cavity.



12. FINAL FITTMENT

Find the slotted hole under the vinyl with your thumb and then poke a screwdriver through the centre of it.

The factory bolt can then be replaced into the side of the console.



Cruiser Consoles

70 Series Landcruiser Console Specialists

Enjoy your new console. Check out our other products at www.cruiserconsoles.net



CHECKLIST – OFFICE USE ONLY

- Console Matches Invoice
- Instructions Match Consoles
- 2x Side Screws
- 1x Rear Cup Bolt
- Correct Cup Holders - Stainless Steel or Black Plastic

Signed _____