

# Cruiser Consoles

70 Series Landcruiser Console Specialists

2535 Toowoomba – Cecil Plains Road

Biddeston QLD 4401

Phone: 0419 784 590

Email: [sales@cruiserconsoles.net](mailto:sales@cruiserconsoles.net)

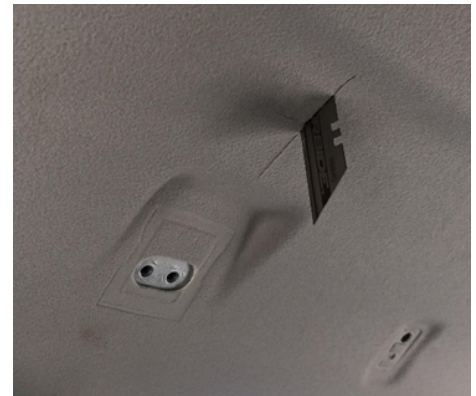
<http://www.cruiserconsole.com.au>

## Single Cab Centre Roof Console Install Instructions

---

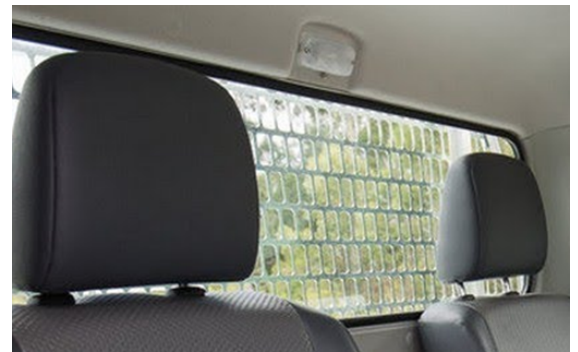
### 1. REAR VIEW MIRROR & SLOT

Remove the rear view mirror and place a 40 mm slot in the roof liner between the mirror and the rib.



### 2. REAR LIGHT REMOVAL

To remove the rear light undo the 2 screws and unclip the wiring. Keep one of these screws to use for the earth on the new light.



### 3. GRAB HANDLE REMOVAL & SUN VISORS

Remove grab handles from the left and right front pillars. Also remove the 2 sun visors to make it easier to run the wires under the roof liner.

- TIP: Use a butter knife in the sides of the clips to remove them without damage.



# Cruiser Consoles

70 Series Landcruiser Console Specialists

---

## 4. ROOF CONSOLE POWER – FIRE WALL

Pictured are the 2 grommets beside the brake booster that can be used to run the power through the fire wall for the roof console.

There are grommets on the passenger side that can be used for the UHF Antenna.



---

## 5. AUXILIARY POWER BOX

This auxiliary power box should be used to power the UHF & Touch Lights.

This prevents interference with the Controller Area Network (CAN) bus circuits.



---

## 6. PILLAR REMOVAL

When removing the pillar plastic trims, take note of the plastic barb clip at the bottom inside of the trim. If this clip stays in the metal pillar it will need to be removed and put back onto the plastic trim before reinstalling. The wires can then be run up the pillars to the roof console. The most common power and earth is up the driver's side pillar. The UHF Antenna can go up the passenger side pillar from the bulbar.



# Cruiser Consoles

70 Series Landcruiser Console Specialists

---

## 7. POWER & EARTH SELECTION

Pictured are the fused terminals that provide the easiest power supply for the console. The wires can be brought up through the bottom of the power box and be connected to the (-neg) Earth terminal. You can choose to connect to constant power – 12V battery (BATT) or accessory power – 12V accessory (ACC). i.e. on with the key.



## 8. RUNNING WIRES

Run the wires from the engine through the pillar, under the roof liner and come out at the slot you previously cut above the rear-view mirror.



## 9. UHF INSTALLATION

Remove the brackets from the console and attach them to the UHF (pictured is the GME TX4500 – as this is the most common UHF installed).

Slide the UHF in from the top of the console and then attach the brackets to the console.



# Cruiser Consoles

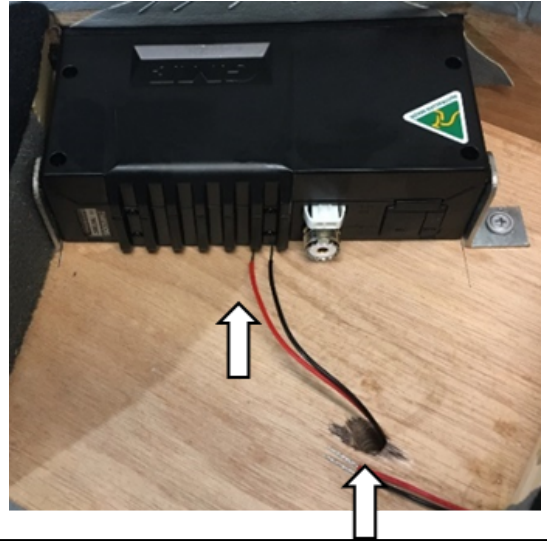
70 Series Landcruiser Console Specialists

---

## 10. CONNECTING TOUCH LIGHTS TO POWER

The 2 wires pictured can be connected to the UHF harness (no switch required as the lights are touch lights with sensor in the middle of the light).

For UHF's with a rear microphone outlet, the microphone curly cord can exit the console beside the rear vision mirror (this will help keep the cord out of the drivers' vision and stop it from swinging).



## 11. REAR LIGHT WIRING

Plug the console harness into the factory harness for the rear lights. Use the saved bolt to screw the earth wire into the old light thread.

Once this has been done the metal tab on the console slides into the rear light hole.

- TIP: Make sure the wires sit above the metal tab, so they do not get crushed.



## 12. INSTALLING CONSOLE

Have an assistant push the console up and back towards the rear of the cab for you to put the rear-view mirror and bolts back into position.



# Cruiser Consoles

70 Series Landcruiser Console Specialists

---

## 13. FINAL INSTALL

Turn the ignition on to check that the touch lights turn on and off by touching the centre of the light.



---

## CHECKLIST – OFFICE USE ONLY

- Console Matches Invoice
- Instructions Match Consoles
- Touch Light Trims Installed – If purchased
- Check UHF Cut-out

Signed \_\_\_\_\_